





*Series 3501 (Axial) Expansion Joint
used on a municipal bridge*



Hyspan's complete line of expansion joint products includes all four metal joint technologies: bellows, packed slip, ball, and braided hose.

Applications involve thermal expansion or contraction, seismic or settlement, and vibration reduction. Hyspan engineers and manufactures in the USA and Mexico. Hyspan's extensive capabilities and experience provides exceptional products.

- ◆ **SIZES:**
3/4" (19mm) through 20' (6m)
- ◆ **DESIGN PRESSURES:**
5, 150, 200, 300 to 6000 psig
- ◆ **TEMPERATURES:**
From cryogenic to +1000 F (538 C)
- ◆ **VARIOUS MATERIALS:**
Including stainless steels and Inconel 625 are available

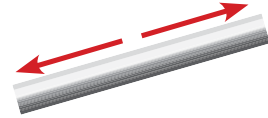
Hyspan is an Expansion Joint Manufacturers Association (EJMA) member and is compliant with ISO 9001:2015.



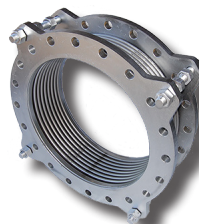
ASME B31.1 and B31.3 pipe codes are commonly supported. ASTM F1120, ASTM F1007, MIL-DTL-17813, PED/CE, and CRN are available.

SYSTEM TECHNOLOGIES:

AXIAL



- ◆ **Series 1501-1506 Single & Dual 3 Ply Laminated Low Area & Liner Bellows Joints**



- ◆ **Series 1507-1510 Hyflex Single Bellows Joints**

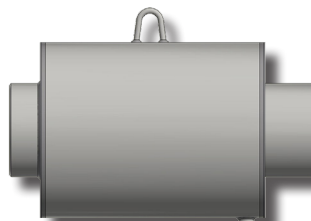
- ◆ **Series 2504-2507 Low Pressure 1 Ply Bellows Joint**

- ◆ **Series 2509-2511 Low Pressure 3 Ply Bellows Joints**



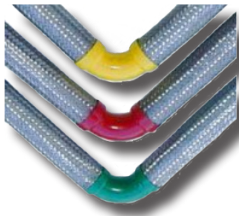
- ◆ **Series 25 RECT Low Pressure Rectangular Bellows Joints**

- ◆ **Series 3501-3506 Single & Dual External Pressure Bellows Joints**



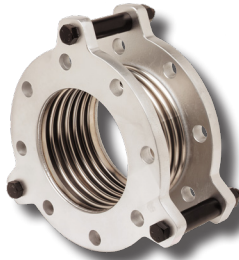
- ◆ **Series 3501PB-3502PB Single External Pressure Balanced Bellows Joints**

Performance, Reliability, Safety



◆ **Series 4501V-4508V**
V-Flex Seismic Steel
& Copper Connectors

◆ **Series 5501R-5502R**
3 Ply Minimum Length
Bellows Connectors

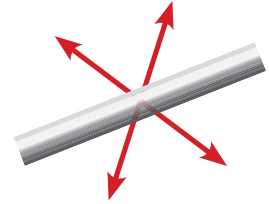


◆ **Series 6501-6506**
Single & Dual Packed
Slip Expansion Joints

◆ **Series 8503-8506 Steel**
Pipe Compensators &
Series 8509-8510
Copper Tube
Compensators



LATERAL



◆ **Series 1507H/G-1510H/G**
Hyflex Single Hinge or
Gimbal Bellows

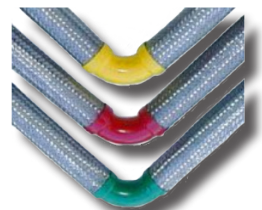


◆ **Series 1511PBH/G-**
1512PBH/G Inline
Pressure Balanced
Universal Hinge or
Gimbal Bellows

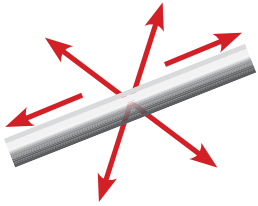


◆ **Series 1511R-1512R**
Hyflex Tied Universal
Bellows

◆ **Series 4501V-4508V**
V-Flex Seismic Steel
& Copper Connectors

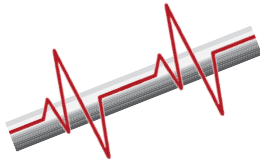


◆ **Series 6600 Hyspan**
Barco Ball Joints



**SEISMIC &
SETTLING**

MULTI-AXIS



◆ **Series 1511R-1512R**
*Hyflex Tied Universal
Bellows Joints*



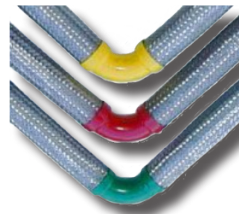
◆ **Series 1511IS**
*Inline Seismic
Universal Bellows
Joints*

◆ **Series 1511PBH/G-
1512PBH/G** *Inline
Pressure Balanced
Universal Hinge or
Gimbal Bellows*



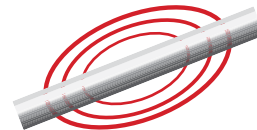
◆ **Series 1507H/G-1510H/G**
*Hyflex Single Hinge or
Gimbal Bellows*

◆ **Series 3501IS-3502IS** *Single Inline
Seismic &
Settling Joints*



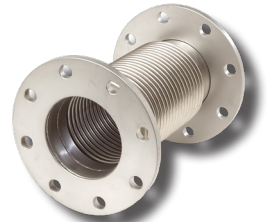
◆ **Series 4501V-4508V**
*V-Flex Seismic Steel
& Copper Connectors*

◆ **Series 6600 Hyspan**
Barco Ball Joints



VIBRATION

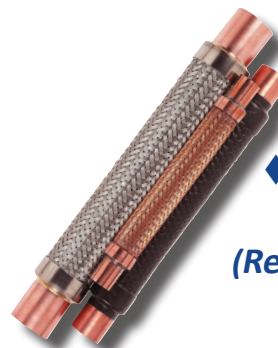
◆ **Series 2509-2511**
*Low Pressure 3 Ply
Bellows Joints*



◆ **Series 4501-4505**
*Straight Braided
Hose Connectors*



◆ **Series 5501R-5502R**
*3 Ply Minimum Length
Bellows Connectors*



◆ **Series Anaconda**
*Vibration Eliminators
(Refrigeration Services)*



www.hyspan.com
websales@hyspan.com
+1 619-421-1355